

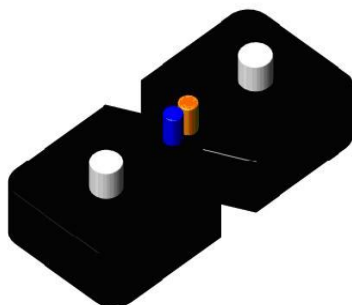
## Fiber Optical Drop Cable -- GJXFH

### Description

The optical fiber unit is positioned in the central. Two parallel Fiber Reinforced Plastics (FRP) are placed at the two sides. Then, the cable is completed with a black or color LSZH or PVC sheath..

### Product characteristics

**Size : 2.0×3.0MM**



- ◆ Special low-bend-sensitivity fiber provides high bandwidth and excellent communication transmission property
- ◆ Two parallel FRP strength members ensure good performance of crush resistance to protect the fiber
- ◆ Simple structure, light weight and high practicability
- ◆ Novel flute design, easily strip and splice, simplify the installation and maintenance
- ◆ Low smoke, zero halogen and flame retardant sheath

### Cable Performance

Fiber Count	fiber style	cable weight (kg/km)	Tensile Strength(N)		Crush Resistance (N)		Bending Radius (D:cable radius)	
			short term	long term	short term	Long term	static	dynamic
1	B1	9.2	≥100	≥60	≥1000	≥500	30D	60D
	B1.3						30D	60D
	B6a						15D	30D
	B6b						10D	25D
2	B1	9.2	≥100	≥60	≥1000	≥500	30D	60d
	B1.3						30D	60D
	B6a						15D	30D
	B6b						10D	25D
4	B1	9.2	≥100	≥60	≥1000	≥500	30D	60D
	B1.3						30D	60D
	B6a						15D	30D
	B6b						10D	25 D

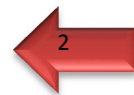
### Other performance

1. Strength member: FRP
2. Jacket: LSZH or PVC
3. Application: Access network, FTTH cable (Fiber to the home), used in indoor cabling,



and end users directly cabling as well used as access building cable.

- 4. Optical fiber meets the requirements of standard ITU-T G657;
- 5. Temperature Range: -40~+70°C
- 6. Package : 0.5~2km/ plastic reel



### Pictures

